

# CCSS Biospecimen Repository

Stella M Davies

Cincinnati Children's Hospital

Cincinnati, Ohio

[Stella.Davies@cchmc.org](mailto:Stella.Davies@cchmc.org)

# Buccal Cell Collection



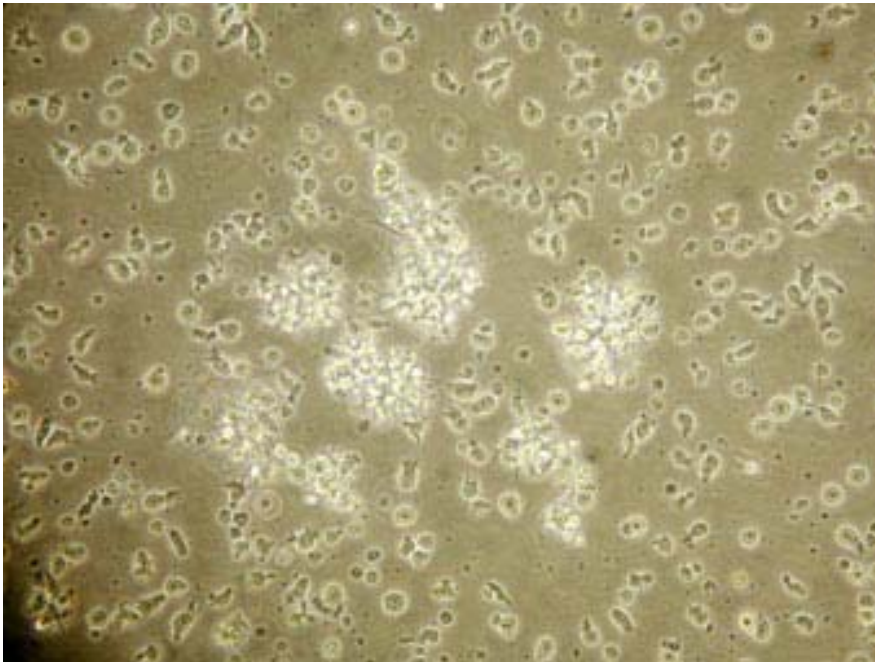
- Collected between May 1991 and June 2006
- Scope rinse, sterile cup, mailed
- >7,500 samples stored
- 5 samples leaked in the mail
- Median 40.4  $\mu\text{g}$  DNA (range 0-9,000 mg)
- Consent returned in box
- 5 samples with zero yield
- 14 technical failures
- Good start but quality and quantity sub-optimal

# Saliva Collection

- Started December 2007
- Spit into kit and mail
- Better quality and quantity of DNA
- Ongoing in new cohort
- Siblings as well as participants collected



# Lymphoblastoid Cell Lines Provide A Renewable Biological Resource



- Requested from patients with second cancers
- Blood collected by home visit; shipped overnight
- >2,000 samples in lab
- Can be grown, studied and put back in the freezer

# Samples

- Buccal/orogene DNA 19,117 submitted samples
- Blood 2,317 submitted samples
- Buccal/orogene 38,234 aliquots of DNA
- Blood 46,340 aliquots of DNA
- Total aliquots in freezers 84,574
- > 10,000 samples dispersed

# Samples Stored

Typecode	Diagnosis	Buccal Cells				Oragene				Blood							
		Total Number of Cases with Sample	Total Number of collections	Number of Collections with Volume >50ul	Number of Collections with Volume >1500ul	Total Number of Cases with Sample	Total Number of collections	Number of collections with Volume >50ul	Number Collections with Volume >1500ul	Total Number of Cases with Sample	Number with Volume >5ml	Number with Volume >50ml	Total Number of Cases Plasma Collected	Total Number of Cases Monocytes Collected	Total Number of Cases Neutrophils Collected	Total Number of Cases Whole Blood Collected	Total Number of Cases Lymphocytes for Culture Collected
1	Leukemia	1899	1906	1899	372	2524	2885	2772	771	841	834	639	811	800	825	4	813
	Acute lymphoblastic leukemia	1726	1733	1726	329	2133	2450	2360	638	765	759	590	740	727	751	4	739
	Acute myeloid leukemia	138	138	138	29	307	344	328	100	52	52	36	49	49	51	0	51
	Other leukemia	35	35	35	14	84	91	84	33	24	23	13	22	24	23	0	23
2	CNS	706	713	711	203	1420	1528	1419	421	205	202	108	196	188	200	3	197
	Astrocytomas	421	427	426	113	836	894	833	246	101	99	53	98	91	101	0	99
	Medulloblastoma, PNET	161	161	161	50	358	385	356	110	68	67	38	66	64	67	3	66
	Other CNS tumors	124	125	124	40	226	249	230	65	36	36	17	32	33	32	0	32
3	Hodgkins Lymphoma	768	779	645	1	1135	1303	1260	385	420	419	219	392	373	403	3	399
4	Non-HD Lymphoma	418	420	418	109	680	757	712	217	152	150	109	151	142	151	1	151
5	Kidney	545	546	545	135	775	858	813	198	122	122	90	122	116	122	0	122
6	Neuroblastoma	413	415	415	104	578	628	601	153	93	93	59	88	84	91	0	90
7	Soft tissue sarcoma	484	491	489	135	565	608	585	158	118	118	58	114	102	118	1	115
8	Bone	444	451	451	126	679	770	733	231	188	188	102	183	167	183	8	182
	Ewings sarcoma	145	147	147	40	250	282	267	81	61	61	32	57	52	57	5	57
	Osteosarcoma	280	284	284	83	392	447	428	132	120	120	69	119	111	119	3	118
	Other bone tumors	19	20	20	3	37	41	38	18	7	7	1	7	4	7	0	7
9	Sibling Controls	1187	1189	1188	430	1010	1014	1014	323	0	0	0	0	0	0	0	0
	<b>TOTALS</b>	6864	6910	6761	1615	9366	10351	9909	2857	2139	2126	1384	2057	1972	2093	20	2069

- Tables of available samples available on the website

# Accessing Samples

- Samples are accessed via the working committees
- Lab happy to provide up to data technical information regarding sample collection, concentration, buffers etc but will not ship without direction from working groups/leadership

